

## 6.3032.150

### 6.3032.150

- 
- |          |                   |                                 |
|----------|-------------------|---------------------------------|
| <b>1</b> | <b>6.1446.030</b> | <b>Ball stopper / B-14/(15)</b> |
|----------|-------------------|---------------------------------|
- For the movable holding of buret tips in titration vessels



- 
- |          |                   |                              |
|----------|-------------------|------------------------------|
| <b>1</b> | <b>6.1446.040</b> | <b>Threaded stopper / M6</b> |
|----------|-------------------|------------------------------|



- 
- |          |                   |                        |
|----------|-------------------|------------------------|
| <b>1</b> | <b>6.1543.060</b> | <b>Tip / M6 thread</b> |
|----------|-------------------|------------------------|

Tip with M6 thread. Together with the 6.1805.160 capillary and the 6.1446.030 link stopper, it makes up the entire 6.1537.010 buret tip.







- 
- |          |                   |                                  |
|----------|-------------------|----------------------------------|
| <b>1</b> | <b>6.1543.200</b> | <b>Titration tip / M6 thread</b> |
|----------|-------------------|----------------------------------|

Titration tip with antidiffusion valve.



---

1	6.1619.000	<b>Adsorber tube for Dosing Unit</b>	
<hr/>			
1	6.1805.100	<b>FEP tubing / M6 / 40 cm</b>	
<hr/>			
1	6.1829.010	<b>FEP aspiration tube M6, 0.25 m</b>	
<hr/>			
1	6.2008.030	<b>Buret tip storage vessel for Dosing Unit</b>	
		Together with 6.2008.050 buret tip holder provides a fastening for the buret tips on 6.3032.XXX Dosing units.	

---

- 
- 1**      **6.2008.050**      **Storage vessel holder for Dosing Unit**  
Together with 6.2008.030 buret tip storage vessel provides a fastening for the buret tip on Dosing units.



- 
- 1**      **6.2244.020**      **Cards for intelligent Exchange Unit**  
Set of 10 pieces, different colors.



- 
- 1**      **6.2739.000**      **Wrench**  
For tightening connectors



- 
- 0**      **6.2803.000**      **Grease (1 oz.)**  
Special quality (without silicone). For grease-free ground joint connections see 6.2713.XXX



- 
- 1**      **6.2803.010**      **Grease (2 g)**  
Special quality (without silicone). For grease-free ground joint connections see 6.2713.XXX



---

**6.1608.020**                      **Glass bottle / 1000 mL / GL 45**

Bottle for auxiliary solutions.



---

**6.1608.023**                      **Amber glass bottle / 1000 mL / GL 45**

For Exchange Units. Bottle for auxiliary solutions.



---

**6.1608.030**                      **Round glass bottle / 1000 mL / GL 45**



---

**6.1608.040**                      **PE bottle / 1000 mL / GL 45**

For Exchange Units. Bottle for auxiliary solutions.



---

**6.1608.050**                      **Drying bottle / 100 mL / GL 45**



---

**6.1608.060****Bottle / 100 mL**

---

**6.1618.000****Thread adapter 32 mm to GL 45**

Adapter for bottles with 32 mm thread (Fluka, Riedel de-Haen 500 mL...) to GL45



---

**6.1618.010****Thread adapter 28 mm to GL 45**

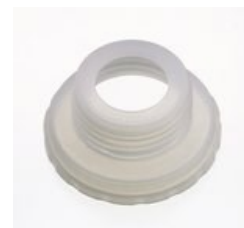
Adapter for bottles with 28 mm thread (Fisher...) to GL45



---

**6.1618.020****Thread adapter S 40 to GL 45**

Adapter for bottles with S40 thread (Merck...) to GL45.



---

**6.1618.050****Thread adapter 40 mm to GL 45**

Adapter for bottles with 40 mm thread to GL45.



---

**6.1618.060****Thread adapter GL 45 to GL 45**

Thread adapter GL45 to GL45; e.g. for reagent bottles with extended flange

